

Steel & 18ct gold bracelet



The following collections feature stainless steel & 18 ct gold bracelets:

Longines PrimaLuna

L8.109.5 – L8.110.5 – L8.111.5 – L8.112.5 – L8.113.5

Longines DolceVita

L5.158.5 – L5.155.5 – L5.502.5 – L5.655.5

The Longines Master Collection

L2.128.5 – L2.257.5 – L2.518.5 – L2.628.5 – L2.755.5 – L2.673.5 – L2.773.5

The Longines Saint-Imier Collection

L2.263.5 – L2.563.5 – L2.763.5 – L2.766.5 – L2.753.5 – L2.752.5

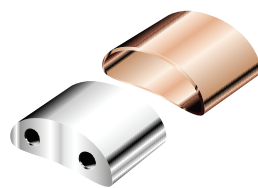
Conquest

L3.276.5 – L3.676.5



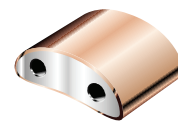
1

The central part of a link is made out of 316L stainless steel.



2

It is wrapped in a 18ct gold cap of a minimum thickness of 0.2 mm.



3

The link is ready.